



National Gallery of Art

CALENDAR OF EVENTS

February 1986

FEBRUARY

Monday, January 27
through
Sunday, February 2

Monday, February 3
through
Sunday, February 9

Monday, February 10
through
Sunday, February 16

Monday, February 17
through
Sunday, February 23

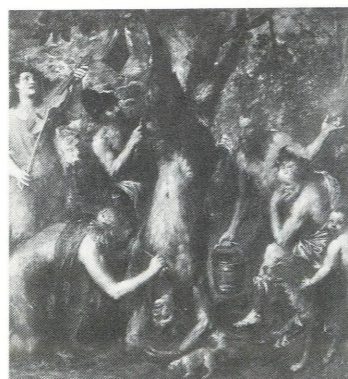
COLLECTION HIGHLIGHTS

Brief gallery talks on a single work of art. Reproductions of the art discussed may be purchased in the Gallery's sales shops; a written text is available without charge.

Tuesday through Saturday 12:00 p.m.
Sunday 2:00 p.m.

January 28-February 2

Titian
The Flaying of Marsyas
(On Special Loan from
the State Museum in
Kroměříž, Czechoslovakia)
West Building
Lobby A



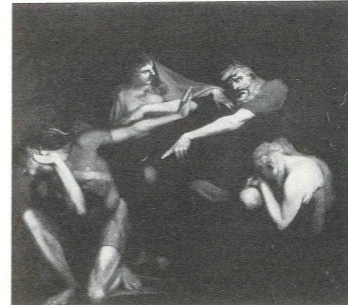
February 4-February 9

Jean-Auguste-Dominique
Ingres
Monsieur Marcotte
(Samuel H. Kress Collection)
West Building
Gallery 56



February 11-February 16

Henry Fuseli
Oedipus Cursing His Son,
Polynices
(Paul Mellon Collection)
West Building
Gallery 61



February 18-February 23

Thomas Dewing
Lady with a Lute
(Gift of Dr. and
Mrs. Walter Timme)
West Building
Gallery 68



SPECIAL TOURS

Fifty-minute tours on related works of art.

Tuesday through Saturday 1:00 p.m.
Sunday 5:30 p.m.

January 28-February 2

*Animals as Symbolic
Emblems in European Art*
West Building
Rotunda

February 4-February 9

*German Expressionist Prints
from the Collection of Ruth
and Jacob Kainen*
East Building
Ground Floor Lobby

February 11-February 16

*"Loves Labors Lost:"
Scenes of Ill-Fated
Romance*
West Building
Rotunda

February 18-February 23

*Old Master Paintings from
British Collections in the
National Gallery of Art*
West Building
Rotunda

FILMS

Free films on art and feature films related to
special exhibitions. Unreserved seats are
available on a first-come, first-seated basis.

East Building Auditorium

January 28-February 2

*One Hundred Years of
Decoration (The English
House, part 4, 30 min.)
and Palladio the Architect
and His Influence in America*
(45 min.); Wed., Thurs.,
Sat. 12:30; Sun. 1:00

*Palaces of Reason and
Delight (Treasure Houses of
Britain, part 2, 58 min.)*
Tues. through Thurs. 2:00

Pride and Prejudice
(directed by Robert Z.
Leonard, 1940, 118 min.)
Sat. 2:30; Sun. 6:00



Rebecca, 1940, to be shown February 7, 8, 9
(Museum of Modern Art/Film Stills Archive)

February 7-February 9

Rebecca (by Alfred
Hitchcock, 1940,
130 min.)
Fri. and Sat. 2:30
Sun. 6:00

February 11-February 16

*Possessions (The English
House, part 5, 30 min.) and
Lacock Abbey, Wiltshire*
(30 min.); Wed. through
Sat. 12:30; Sun. 1:00

*Recapturing the Past
(Treasure Houses of Britain,
part 3, 58 min.)*
Tues. through Thurs. 2:00

The Uninvited (by Lewis
Allen, 1944, 98 min.) and
Kitty (by Mitchell Leisen,
1945, 104 min.)
Fri. and Sat. 2:30
Sun. 6:00

February 18-February 23

*Technical Developments
(The English House, part 6,
30 min.) and Every Day
Except Christmas* (37 min.)
Wed. through Sat. 12:30

*Building for Eternity
(Treasure Houses of Britain,
part 1, 58 min.);* Tues.
through Thurs. 2:00

*The Importance of Being
Earnest* (by Anthony
Asquith, 1952, 95 min.) and
Blithe Spirit (by David Lean,
1945, 96 min.)
Fri. and Sat. 2:30



*The Importance of Being
Earnest*, 1952, to be shown
February 21 and 22 (Museum of
Modern Art/Film Stills Archive)

SUNDAY LECTURES

Free lectures by distinguished visiting
scholars. No registration needed but
seating is limited.

Sunday 4:00 p.m.

East Building Auditorium

February 2

*The Englishman on the
Grand Tour in the
Eighteenth Century*

Sir Brinsley Ford
O.B.E., F.S.A.
London

February 9

*And They All Came
Tumbling Down:
The Demolition of the
Great Country Houses
in Britain, 1870-1970*

John Harris
Director, Royal Institute
of British Architects
London

February 16

*What Is an Impressionist
Painting Really About?*

Kermit S. Champa
Professor of History of Art
Brown University
Providence

February 23

*A Family Reunion:
Correspondences between
British Country House
Treasures and the National
Gallery's Collection*

William J. Williams
Lecturer
National Gallery of Art

SUNDAY CONCERTS

*44th Season of the
National Gallery Concerts*

Free concerts by the National Gallery
Orchestra, recitalists, and ensembles.
Unreserved seats available from 6:00 p.m.
All concerts are broadcast live on WGMS
570 AM and 103.5 FM.

Sunday 7:00 p.m.

West Building, West Garden Court

February 2

Daisy Jackson, *Soprano*

Music of Handel, Wolf,
Debussy, Moore,
R.V. Williams, Johnson,
Boatner, and Dett

West Building,
West Garden Court

February 9

National Gallery Orchestra
George Manos, *Conductor*

Music of Handel, Haydn,
Fauré, and Vlahopoulos

West Building,
West Garden Court

February 16

Lily New, *Pianist*

Music of Scarlatti,
Tscherepnin, Ma shui-Long,
and Liszt

West Building,
West Garden Court

February 23

Linda Mabbs, *Soprano*

Music of Berg, Dowland,
Argento, Fauré, Mozart,
Debussy, and Obradors

West Building,
West Garden Court

SPECIAL LOANS

Titian

The Flying of Marsyas

Through April 13, 1986
Lobby A, West Building

Titian's masterpiece, *The Flying of Marsyas*, is on special loan from the State Museum in Kroměříž, Czechoslovakia. The painting depicts with horrific eloquence the Greek myth of Apollo and Marsyas. The god Apollo is stripping the skin from the live satyr, Marsyas, who has lost to Apollo in a music-making contest. The painting is a work of Titian's later years, painted sometime between 1570 and his death in 1576, when Titian was in his late eighties. Until its recent showing in London, the painting had not been seen outside Czechoslovakia since the 17th century.

Willem van de Velde
Ships in a Stormy Sea

On loan from the
Toledo Museum of Art, Ohio
Through mid-May, 1986
Gallery 50
Main Floor, West Building

This large canvas, typical of the dramatic marine paintings common in Dutch art, is a masterpiece by the Dutch 17th-century painter Willem van de Velde (1633-1707).

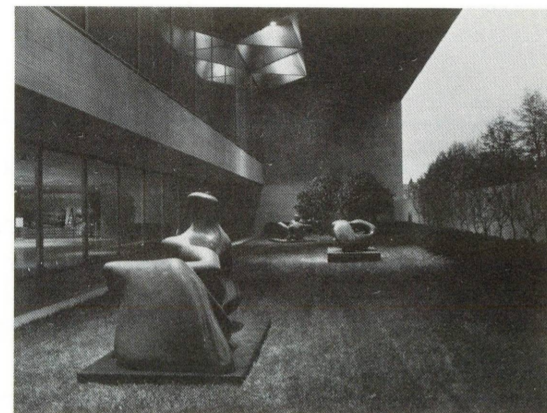
Henry Moore

Reclining Connected Forms, 1969

Reclining Figure: Angles, 1979
Reclining Figure: Hand, 1979

On loan from
George and Virginia Ablah
Pennsylvania Avenue side
of the East Building

These three works are part of one of the greatest collections of Henry Moore sculptures in the world. They have been installed at the Gallery in an open-air garden especially created for them, consisting of holly, Japanese maple, dogwood, euonymus, and grass, on the visitor's route to *The Treasure Houses of Britain* exhibition.



Henry Moore, *Reclining Figure: Hand*, 1979; *Reclining Connected Forms*, 1969; *Reclining Figure: Angles*, 1979
The George and Virginia Ablah Collection

Family Programs

The Education Department will continue its popular programs for families with children ages six to twelve. All Saturday mornings in February will feature *The New Painting: Impressionism 1874-1886*. The programs, which are free, and last approximately 1½ hours, will begin in the West Building Lecture Hall at 10:00 a.m. Advance registration is required; call 202/842-6249 for reservations. Children must be accompanied by an adult.

Foreign Language Tours

Regularly scheduled foreign language tours of the West Building are offered on Tuesdays at noon beginning in the West Building Rotunda. The February schedule is as follows:

February 4: *French*
February 11: *Spanish*
February 18: *German*
February 25: *Italian*

Groups wishing to schedule tours in these or other foreign languages can make an appointment by calling the Education Department at 202/842-6249. Dutch, Hebrew, Portuguese, Greek, and Chinese are some of the many languages available.

INTRODUCTORY TOURS

Introduction to the
East Building Collections

Saturday 11:00 a.m. and
Sunday 1:00 p.m. only
East Building, Ground Floor Lobby

Introduction to the
West Building Collections

Mon. through Sat. 3:00 p.m.
Sun. 5:00 p.m.
West Building, Rotunda

Special Course

Impressionism:
A New Way of Seeing

This six-week series of free slide lectures is offered in conjunction with the exhibition, *The New Painting: Impressionism 1874-1886*. The course will explore the innovative methods of painters such as Monet, Degas, Seurat, and Cézanne, and present the context in which their paintings were created and viewed. The lectures are given on Saturdays at 11:00 a.m. and repeated on Tuesdays at 12:30 p.m. in the East Building Auditorium. No reservations are required, but space is limited.

February 8, 11: *Antecedents*

February 15, 11: *The Salon and Its "Refusés"*

February 22, 11: *The Celebration of Modern Life*

March 1, 4: *The New Landscape*

March 8, 11: *The Scientific Muse*

March 15, 18: *The Impressionist Legacy*

Sunday Concerts

For the duration of the exhibition *The New Painting: Impressionism 1874-1886*, the Sunday Evening Concerts will be held in the West Garden Court of the West Building. The programs, presented at 7:00 p.m. every Sunday, are free of charge.

Rubens Peale with a Geranium, 1801
Rembrandt Peale, 1778-1860

American Galleries 60A
Main Floor, West Building

Purchased at auction in New York on December 5, 1985, *Rubens Peale with a Geranium* by Rembrandt Peale is the first acquisition to be made by the Gallery with the income from its new Patrons' Permanent Fund. That fund, the fruit of a nationwide fund-raising campaign, now exceeds \$55 million.

CONTINUING EXHIBITION

The New Painting:
Impressionism 1874-1886

Through April 6, 1986
New 19th-Century Galleries
Main Floor, West Building

Commemorating the one-hundredth anniversary of the last of eight exhibitions held by the impressionist painters from 1874 through 1886, a selection of 150 paintings of exceptional quality remains on view in the new 19th-century galleries in the West Building, Main Floor. Included in this exhibition are works by Monet, Degas, Renoir, Cézanne, Pissarro, Sisley, Cassatt, Morisot, Redon, Seurat, Gauguin, and Caillebotte. *The New Painting* reevaluates the evolution of the impressionist movement and its impact on the development of the modern vision. Charles S. Moffett, curator-in-charge of painting for The Fine Arts Museums of San Francisco, is curator of the exhibition. *The New Painting* has been made possible by AT&T.

For recorded information on the exhibition, call 202/842-6699.

Pass System

Admission to the exhibition is by free pass obtained at the exhibition desk in the East Garden Court of the National Gallery's West Building. Passes are distributed on a first-come, first-served basis, for the same day only. Once in the exhibition, visitors may view it at their own pace.

Through the courtesy of AT&T, passes may be booked in advance free of service charge through TicketCenter. For information on the TicketCenter outlet nearest you, or to order passes, call:

Washington: 202/432-0200

Baltimore: 301/792-4001

Richmond: 804/780-3777

A toll-free number serving New York and its suburbs, Delaware, Pennsylvania, New Jersey, Maryland, the District of Columbia, and Virginia, is also available: 800/448-9009.

Group Reservations

Groups of 20 or more may reserve passes in advance by mail. Since these passes permit entry on the half-hour (11:30 a.m.-3:30 p.m. Monday through Saturday and 1:30 p.m.-5:30 p.m. on Sundays), please specify the time you would like to come, as well as the date and the number in your group. Please include alternative times and dates. Address your requests to:

Impressionism Group Reservations
National Gallery of Art
Washington, D.C. 20565

This important American painting is Rembrandt Peale's masterpiece. It is a sensitive portrayal of the artist's younger brother, Rubens, who is credited with cultivating the first geranium in America. Thus, the portrait stands as a compelling record of both artistic and scientific achievement.



Gustave Caillebotte, *Young Man at His Window*
Private Collection

You must enclose a self-addressed, stamped envelope for confirmation. We cannot make changes in a reservation once it is confirmed. We can accept cancellations only.

Introductory Slide Lecture

Throughout the month of February, the National Gallery of Art continues to offer a free, 30-minute orientation slide lecture on *The New Painting: Impressionism 1874-1886*. It is given Monday through Friday at 11:00 a.m. in the Lecture Hall on the Ground Floor of the West Building. Seating is limited each day to a maximum of 100 people. No advance registration is necessary.

The New Painting slide lecture will not be given February 3-7.

Exhibition Catalogue

All of the paintings in the exhibition are illustrated in color in the catalogue, *The New Painting: Impressionism 1874-1886*, available for \$19.95 both in the sales areas of the National Gallery and through the Publications Service mail order division. Please include an additional \$2.00 to cover shipping costs. Checks should be made payable to the Publications Service.

Recorded Tour

A recorded tour narrated by J. Carter Brown, Director of the National Gallery, is available at a nominal cost. Special rates for groups may be arranged by calling 202/842-6592.

The Treasure Houses of Britain:
Five Hundred Years of Private
Patronage and Art Collecting

Through March 16, 1986
Mezzanine and Upper Levels
East Building

This exhibition, the most complex ever undertaken by the National Gallery of Art, traces the British country house tradition of art collecting over 500 years. It remains on view on the Mezzanine and Upper Levels of the East Building.

The works on loan include paintings by Rubens, Van Dyck, Holbein, Velasquez, Canaletto, Hogarth, Gainsborough, and Sargent; sculpture by Praxiteles, Canova, Flaxman, and Henry Moore; furniture by Boulle, Kent, and Chippendale; Meissen, Sevres, and Chelsea, as well as Chinese porcelain; and examples of tapestries, armor, jewelry, silver, and other decorative arts.

The installation, designed together with guest curator Gervase Jackson-Stops, Gaillard Ravenel, and Mark Leithauser, is evocative of the settings from which the objects have come—the British country house. The exhibition has been made possible by Ford Motor Company.

The exhibition catalogue, illustrated with more than 700 colorplates, is available through the Publications Service in soft cover (\$24.95) or in hard cover (\$60.00). If ordering by mail, please include a \$2.00 shipping charge in a check or money order made payable to the Publications Service.

Extended Hours

Hours for *The Treasure Houses of Britain* only, have been extended to 7:00 p.m. daily. Sunday hours remain the same, noon to 9:00 p.m. For recorded information on the exhibition, call 202/842-6672.

Pass System

Admission to *The Treasure Houses of Britain* is by free pass, timed to the half hour, which can be obtained on the day of entry at the pass desk located on the Ground Floor of the East Building.

CLOSING EXHIBITION



Otto Dix, *Lady in a Feathered Hat*, 1923
Collection of Ruth and Jacob Kainen



Looking through the far door of the Jacobean Long Gallery to the trompe l'oeil painting by Samuel van Hoogstraeten, *A View Down a Corridor*, from Dyrham Park (The National Trust, Blathwayt Collection).

Reservations can be made by sending a written request at least three weeks in advance to:

THB Reservations
Education Department
National Gallery of Art
Washington, D.C. 20565

Please specify the preferred date and time, alternate dates and times, and include a self-addressed, stamped envelope so that you can receive confirmation of your reservation.

Groups of twenty or more may reserve passes in advance by writing to the above address.

A number of passes will also be maintained at the pass desk each day for visitors without advance reservations.

Recorded Tours

Two different recorded tours, "Highlights" and "An Inside View," narrated by J. Carter Brown, Director of the National Gallery, are available at a nominal cost. Special rates for groups may be arranged by calling 202/842-6592.

German Expressionist Prints
from the Collection of
Ruth and Jacob Kainen

Through February 9, 1986
Ground Floor
East Building

On view on the Ground Floor of the East Building, this exhibition of 90 German Expressionist prints from the private collection of Ruth and Jacob Kainen represents a cross-section of prints made in Germany during the first part of the 20th century. Works by Ernst Ludwig Kirchner, a leader of Die Brücke—an organization of artists founded in Dresden in 1905—are the focal point of this outstanding print collection.

GENERAL INFORMATION

NATIONAL GALLERY OF ART

Washington, D.C. 20565

The telephone number for general information is 202/737-4215. To change your mailing address for the calendar of events, please mail a copy of your new address to the Information Office, National Gallery of Art, Washington, D.C. 20565, taking care to include the mailing label from your last Calendar of Events.

GALLERY HOURS:

Monday through Saturday 10:00 a.m. to 5:00 p.m.

Sunday 12 noon to 9:00 p.m.

East Building open Monday through Saturday
10:00 a.m. to 7 p.m.

The Gallery is located between 3rd and 7th Streets, N.W., on Constitution Avenue. The East and West Buildings are connected by an all-weather underground passage with a moving walkway. Entrances to the West Building are on the Mall, on 7th Street, on Constitution Avenue at 6th Street, which has a ramp for the handicapped, and off 4th Street. The entrance to the East Building is on 4th Street off National Gallery Plaza and also has a ramp for the handicapped.

RESTAURANTS

Four restaurants offer luncheon and light snacks throughout the year. Monday through Saturday, hours of operation are:

Terrace Café: 11:00 to 5:00

Café/Buffer: 10:00 to 5:00

Cascade Café: 11:00 to 3:30

Garden Café: 11:00 to 4:30

Sunday hours are 12 noon to 7:00 p.m. for the Terrace Café, Café/Buffer, and Garden Café;
12 noon to 6:00 p.m. for the Cascade Café.

COVER: Rembrandt Peale, *Rubens Peale with a Geranium*, 1801
National Gallery of Art, Patrons' Permanent Fund