

**National Gallery of Art**

---

**CALENDAR OF EVENTS**

*December 1987*

# DECEMBER

**Monday, November 30  
through  
Sunday, December 6**

**Monday, December 7  
through  
Sunday, December 13**

**Monday, December 14  
through  
Sunday, December 20**

**Monday, December 21  
through  
Sunday, December 27**

## COLLECTION HIGHLIGHTS

Brief gallery talks given by Education Department lecturers on a single work of art. Reproductions of the work discussed may be purchased in the Gallery's sales shops; a written text is available without charge.

*Tuesday through Saturday 12:00 p.m.  
Sunday 2:00 p.m.*

**December 1-December 6**

Pisanello  
*John VIII Palaeologus*  
(Samuel H. Kress Collection)  
West Building  
Ground Floor North 4

Gail Feigenbaum, Lecturer



**December 8-December 13**

Pontorno  
*The Holy Family*  
(Samuel H. Kress Collection)  
West Building  
Gallery 10

Amanda Renshaw,  
Education Intern



**December 15-December 20**

John Marin  
*The Grey Sea*  
(Gift of Mr. and Mrs.  
John Marin, Jr.)  
West Building  
Gallery 71

Julie Springer, Lecturer

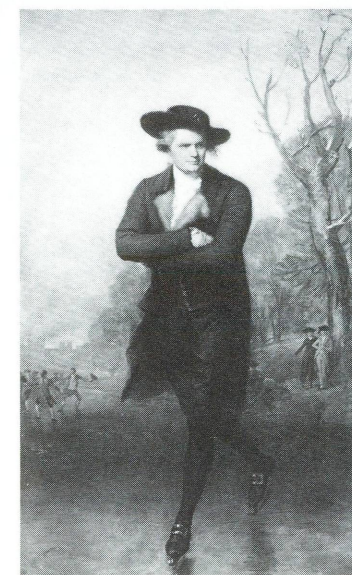


**December 22-December 27**

Gilbert Stuart  
*The Skater (Portrait of  
William Grant)*  
(Andrew W. Mellon  
Collection)  
West Building  
Gallery 64

William J. Williams,  
Lecturer

*(The Gallery will be closed  
Christmas Day, Dec. 25)*



## SPECIAL TOURS

Fifty-minute tours given by Education Department lecturers on related works of art.

*Monday through Friday 11:00 a.m.*

**November 30-December 4**

*Still-Life Paintings  
in the National Gallery  
of Art's Collections*  
West Building, Rotunda

**December 1-December 6**

*From the Spiritual to the  
Sublime: Women in Interiors*  
West Building, Rotunda

Elizabeth Eder, Lecturer

**December 7-December 11**

*Scenes of Daily Life*  
West Building, Rotunda

**December 8-December 13**

*An American Sampler: Folk  
Art from the Shelburne  
Museum*  
East Building  
Ground Floor Lobby

Susan R. Arensberg, Lecturer

**December 14-December 18**

*Introduction to the  
Ground Floor Galleries*  
West Building, Rotunda

**December 15-December 20**

*The Christmas Story  
in Art*  
West Building, Rotunda

Donna Mann, Lecturer

**December 21-December 24**

*Masterpieces of Sculpture  
from the Permanent  
Collection*  
West Building, Rotunda

**December 22-December 27**

*Introduction to the  
West Building Collections*  
West Building, Rotunda

Education Department Staff

*(The Gallery will be closed  
Christmas Day, Dec. 25)*



Adriaen Isenbrant, *The Adoration of the Shepherds* (detail), c. 1530s  
National Gallery of Art  
Ailsa Mellon Bruce Fund

## FILMS

Free films on art and feature films related to special exhibitions. Unreserved seats are available on a first-come, first-served basis.

*East Building Auditorium*

**December 2-December 6**

*Ansel Adams, Photographer*  
(John Huszar, 1982, 58 min.)  
Wed. through Sat. 12:30  
Sun. 1:00

*The Mirror*  
(Andrei Tarkovsky, 1975,  
105 min.)  
Sat. 2:00

*Nostalghia*, 1983, by Andrei  
Tarkovsky, to be shown December  
19 and 20 (Phototeque, New York)

**December 9-December 13**

*Jackson Pollock: Portrait*  
(Amanda Pope, 1982,  
60 min.)  
Wed. through Sat. 12:30  
Sun. 1:00

*Stalker*  
(Andrei Tarkovsky, 1979,  
161 min.)  
Sat. 2:00; Sun. 6:00

**December 16-December 20**

*Andy Warhol*  
(Lana Yokel, 1974, 53 min.)  
Wed. through Sat. 12:30  
Sun. 1:00

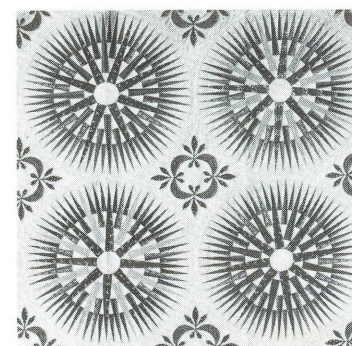
*Nostalghia*  
(Andrei Tarkovsky, 1983,  
120 min.)  
Sat. 2:00; Sun. 6:00

**December 23-December 27**

*Quilts in Women's Lives*  
(Pat Ferrero, 1983, 28 min.)  
Wed., Thurs., Sat. 12:30  
Sun. 1:00

*Backstage at the Kirov*  
(Armand Hammer  
Productions, 1983, 80 min.)  
Sun. 4:00

*The Sacrifice*  
(Andrei Tarkovsky, 1986,  
149 min.)  
Sat. 2:00; Sun. 6:00



*Mariner's Compass Quilt* (detail),  
1835, Shelburne Museum, Vermont

## SUNDAY LECTURES

Free lectures given by distinguished visiting scholars. No reservations needed, but seating is limited.

*Sunday 4:00 p.m.  
East Building Auditorium*

**December 6**

*Conversations with  
Artists, IV*  
*Speakers:* Scott Burton,  
George Segal

*Interviewer:* Nan Rosenthal  
Curator of  
Twentieth-Century Art  
National Gallery of Art

**December 13**

*Georgia O'Keeffe:  
Art and Artist*

Jack Cowart  
Curator of  
Twentieth-Century Art  
National Gallery of Art

**December 20**

*Contemporary Public  
Sculpture*

Virginia Mecklenburg  
Curator-in-Charge  
Department of Paintings  
and Sculpture  
National Museum of  
American Art  
Washington

**December 27**

No Sunday lecture this week

The film *Backstage at the  
Kirov* (80 min.) will be  
shown at 4:00

## SUNDAY CONCERTS

Free concerts by the National Gallery Orchestra, recitalists, and ensembles. Unreserved seats available from 6:00 p.m. All concerts are broadcast live by WGMS 570 AM and 103.5 FM.

*Sunday 7:00 p.m.  
West Building, West Garden Court*

**December 6**

Joseph Porrello, *Tenor*  
Kenneth Merrill, *Piano*

Works by Schubert  
and Menotti

**December 13**

National Gallery Orchestra  
George Manos, *Conductor*

Works by Beethoven,  
Stravinsky, and Washington  
premiere of Richard Bales'  
*Elegy for a Master*

**December 20**

UMBC Camerata  
Samuel Gordon, *Director*

Christmas Program

**December 27**

Francis Conlon, *Piano*

Works by Haydn, Liszt,  
Ravel, and Barber



Giorgione, *The Adoration of the Shepherds*, c. 1505/1510  
National Gallery of Art,  
Samuel H. Kress Collection 1939

Family Programs

The Education Department continues its series of programs for families with children ages 6 to 12. This month features a demonstration of holiday customs from different lands followed by a tour of the National Gallery's Christmas paintings. Participants are asked to meet at 10:00 a.m. each Saturday morning for the free program, which lasts an hour and a half. On December 5 the group will gather in the Small Auditorium, East Building; other sessions will meet in the Lecture Hall, West Building. Children must be accompanied by an adult. Please call (202) 842-6249 for reservations.

Film Programs

East Building Auditorium

"The Films of Andrei Tarkovsky," an eight-part series devoted to the work of this Russian director, continues through December 27. Shunning theatrical convention, Tarkovsky stressed the poetic and artistic aspects of film, creating images of extraordinary power and beauty. His films often resemble carefully composed

paintings, with almost imperceptible movements and subtly changing light. Anna Lawton, associate professor of Russian literature and film at Purdue University, has organized the series for the National Gallery and will introduce the programs on December 12 and 19. See reverse side for additional information.

INTRODUCTORY TOURS

Introduction to the West Building Collections

Monday through Saturday 3:00 p.m.  
Sunday 5:00 p.m.  
West Building, Rotunda

Introduction to the East Building Collections

Monday through Saturday 11:00 a.m.  
Sunday 1:00 p.m.  
East Building, Ground Floor Lobby

FOREIGN LANGUAGE TOURS

Regularly scheduled foreign language tours of the West Building are offered on Tuesdays at noon beginning in the Rotunda. The December schedule is as follows:

- December 1 *French*
- December 8 *Spanish*
- December 15 *German*
- December 22 *Italian*

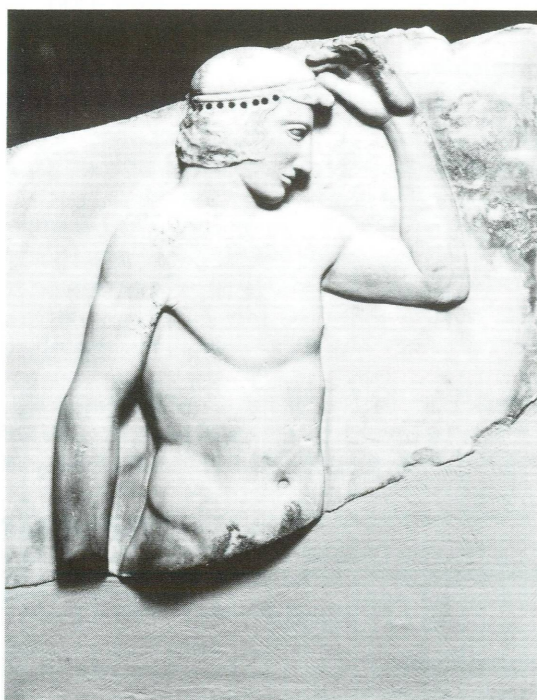
JANUARY PREVIEW

The Human Figure in Early Greek Art

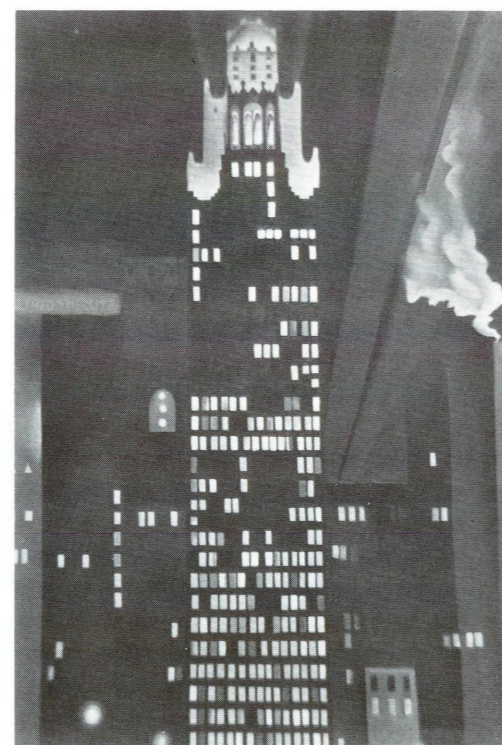
January 31- June 12, 1988  
East Building, Concourse Level

Sixty-seven Greek works of art from the 9th to the 5th centuries B.C. will make up this exhibition. It explores the treatment of the human figure during the formative stages which culminated in Greek Classicism and influenced Western art for centuries thereafter. The exhibition will include objects from the Geometric period (9th and 8th centuries B.C.), the Orientalizing period (7th century B.C.), the Archaic period (6th century B.C.), and the Early Classical period (5th century B.C.).

Mostly made in the principal city-state of Athens, the marble, bronze, and terracotta sculptures and painted vases to be displayed also originated from other major centers of the Greek world and from the great Pan-Hellenic sanctuaries of Olympia and Delphi. The exhibition has been selected from the permanent collections of four museums in Athens and a number of regional Greek museums. It will be accompanied by a group of models illustrating the history of the Acropolis in Athens, from which several of the objects in the show come, and a film, made for the exhibition, giving the cultural background of Greece in that crucial period in the formation of Western civilization.



Marble Relief of a Victorious Boy Athlete, c. 470-460 B.C.  
National Archaeological Museum, Athens



Georgia O'Keeffe, *Radiator Building - Night, New York*, 1927  
Alfred Stieglitz Collection, Carl van Vechten Gallery of Fine Arts at Fisk University  
© Estate of Georgia O'Keeffe

Georgia O'Keeffe 1887-1986

Through February 21, 1988  
East Building  
Upper Level and Mezzanine

This centennial exhibition of works by Georgia O'Keeffe celebrates the artistic achievement of this major American artist. The exhibition includes 111 oil paintings, watercolors, pastels, and drawings, many of them rarely seen in public. It focuses on the most influential aspects of O'Keeffe's career: abstractions, flower paintings, cityscapes, still lifes, and landscapes. The catalogue, with essays by co-curators Jack Cowart of the National Gallery and Juan Hamilton, also includes a selection of previously unpublished letters by O'Keeffe to artists and other friends, assembled and annotated by National Gallery research curator Sarah Greenough. Organized by the National Gallery, the exhibition will subsequently be seen at the Art Institute of Chicago (March 5-June 19, 1988), the Dallas Museum of Art (July 31-October 16, 1988), and the Metropolitan Museum of Art, New York (November 19, 1988-February 5, 1989). The exhibition is made possible by a grant from Southwestern Bell Foundation.



Georgia O'Keeffe, *Pattern of Leaves*, c. 1923  
The Phillips Collection, Washington, D.C.



Jack Tar, c. 1860-1870  
Shelburne Museum, Vermont

An American Sampler: Folk Art from the Shelburne Museum

Through April 14, 1988  
East Building, Upper Level

The Shelburne Museum in Vermont holds one of the greatest collections of its kind anywhere, yet most of these works from America's artistic and cultural heritage have not been exhibited widely and remain unknown to the American public. Among the 121 objects included in the exhibition are quilts and coverlets, hooked rugs, weather vanes and whirligigs, decoys, carousel animals, trade signs, and carved figures. The selection has been overseen by John Wilmerding, deputy director of the National Gallery of Art and noted scholar of American art. Organized to coincide with the Shelburne Museum's fortieth anniversary, the exhibition will travel following its Washington venue to the Amon Carter Museum, Fort Worth (May 7-September 4, 1988), the Denver Art Museum (October 15, 1988-January 8, 1989), the Los Angeles County Museum of Art (February 16-April 30, 1989), the Wadsworth Atheneum, Hartford (June 4-September 3, 1989), the New-York Historical Society (October 3, 1989-January 7, 1990), and the Worcester Art Museum (April 15-August 5, 1990). The exhibition is made possible by a generous grant from The New England.

Passes and Information

**Pass System.** On crowded weekdays and weekends, free passes will be distributed if necessary on a first-come, first-served basis. Passes are for specified half-hour entry times.

**O'Keeffe passes:** May be obtained at the special entrance to the East Building designated by the *Georgia O'Keeffe* banner.

**Shelburne passes:** May be obtained at the special exhibition desk located on the Upper Level of the East Building.

**Recorded Information.** Current information on the *Georgia O'Keeffe* and *Shelburne* exhibitions is available by calling (202) 842-3472.



Rosso Fiorentino, *Annunciation*, 1531 or 1532  
Graphische Sammlung Albertina, Vienna

Rosso Fiorentino Drawings, Prints, and Decorative Arts

Through January 3, 1988  
West Building, Central Gallery

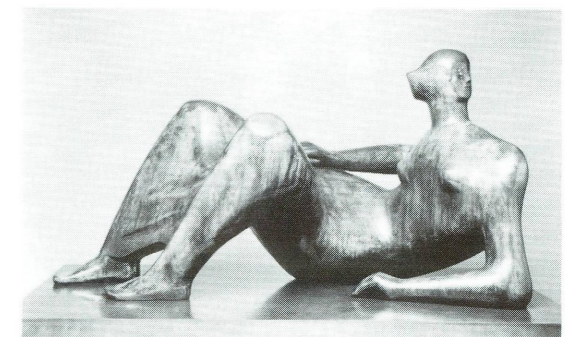
Internationally known during his lifetime, Rosso Fiorentino is today regarded as one of the finest and most individualistic Italian artists of the sixteenth century. Rosso was active in Florence and Rome before being called to France in 1530 to become the principal painter to King Francis I. His sophisticated style had great impact in France, bringing the art of the Italian Renaissance to Paris and Fontainebleau. Twenty-eight of his finest surviving drawings and eighty prints after his compositions convey the beauty and power of Rosso's imagery. Because his designs were widely influential in decorative arts, the exhibition includes majolica and Limoges enamels as well as two important tapestries that were

executed from his compositions. The scholarly catalogue accompanying the exhibition is written by Prof. Eugene A. Carroll of Vassar College, a leading authority on Rosso. H. Diane Russell is the coordinator of the exhibition for the National Gallery. The exhibition is supported by an indemnity from the Federal Council on the Arts and the Humanities.

A Century of Modern Sculpture: The Patsy and Raymond Nasher Collection

Through January 3, 1988  
East Building, Mezzanine,  
Ground Floor, and Concourse

A select overview of modern sculpture, this exhibition shows over seventy works from one of the finest private collections of modern sculpture in the world. The exhibition includes concentrations of sculpture by diverse modern masters of the figurative and constructivist traditions as well as a selection of minimal, pop, and postmodernist objects. The sculpture is installed at the entrance to the East Building, on three levels of the East Building, and in the north sculpture court. There are important examples of work by Jean Arp, Constantin Brancusi, Alexander Calder, Raymond Duchamp-Villon, Max Ernst, Alberto Giacometti, Barbara Hepworth,



Henry Moore, *Reclining Figure: Angles*, 1979 (cast 1980)  
Collection of Mr. and Mrs. Raymond D. Nasher

Gaston Lachaise, Henri Matisse, Joan Miró, Henry Moore, Isamu Noguchi, Pablo Picasso, Medardo Rosso, and Auguste Rodin. The postwar objects include sculpture by Jonathan Borofsky, Anthony Caro, Jean Dubuffet, Ellsworth Kelly, Barnett Newman, Claes Oldenburg, George Segal, and seven works by David Smith. This exhibition is supported by Northern Telecom.

Master Drawings from The Armand Hammer Collection

West Building, Ground Floor

Selections from one of the finest collections of drawings in American private hands are exhibited in The Armand Hammer Collection galleries on the ground floor of the West Building. The collection has been formed by Dr. Armand Hammer of Los Angeles. This month a new selection will continue on view, consisting of eighteenth-century drawings. This is one of the strongest areas in the Hammer Collection, including master works by Watteau, Tiepolo, and Fragonard, as well as a number of recent acquisitions added to the collection this summer.

Continuing on view is Raphael's large-scale preparatory drawing, or "cartoon," for the painting *La Belle Jardinière* in the Louvre. Pricked for transfer to a panel, it is the only full-scale cartoon in the United States by a Renaissance artist. It has been acquired by the National Gallery of Art through the generosity of The Armand Hammer Foundation, and is on display in a gallery reminiscent of a Renaissance chapel, recently constructed to house it and other drawings from The Armand Hammer Collection on a rotating basis.



Donato Creti, *Apollo Standing in a River Landscape*, 1720-1730  
National Gallery of Art,  
The Armand Hammer Collection 1987

# GENERAL INFORMATION

## NATIONAL GALLERY OF ART

Washington, D.C. 20565

## GALLERY HOURS

Monday through Saturday 10:00 a.m. to 5:00 p.m.

Sunday noon to 9:00 p.m.

GALLERY TO BE CLOSED DECEMBER 25 AND JANUARY 1

The telephone number for general information is (202) 737-4215.

To change your mailing address for the Calendar of Events, please mail a copy of your new address to the Information Office, National Gallery of Art, Washington, D.C. 20565, taking care to include the mailing label from your last Calendar of Events.

The Gallery is located between 3rd and 7th Streets, N.W., on Constitution Avenue. The East and West Buildings are connected by an all-weather underground passage with a moving walkway. Entrances to the West Building are on the Mall, on 7th Street, on Constitution Avenue at 6th Street, which has a ramp for the handicapped, and off 4th Street. The entrance to the East Building is on 4th Street off National Gallery Plaza and also has a ramp for the handicapped.

## RESTAURANTS

Four restaurants offer luncheon and light snacks throughout the year. Hours of operation from Monday through Saturday are:

Terrace Café:	11:00 to 4:30
Concourse Buffet:	10:00 to 4:00
Cascade Café:	11:00 to 2:30 (lunch) 2:30 to 4:30 (afternoon tea service and ice cream)
Garden Café:	11:00 to 4:30

Sunday hours are noon to 6:00 p.m. for the Terrace Café, Concourse Buffet, and Garden Café; noon to 3:30 p.m. for the Cascade Café.

COVER: *Fish with Flag Sign*, c. 1850  
Shelburne Museum, Vermont