



National Gallery of Art

CALENDAR OF EVENTS

November 1989

NOVEMBER

Monday, October 30
through
Sunday, November 5

Monday, November 6
through
Sunday, November 12

Monday, November 13
through
Sunday, November 19

Monday, November 20
through
Sunday, November 26

COLLECTION HIGHLIGHTS

Brief gallery talks given by Education Department lecturers on a single work of art. Reproductions of the works discussed may be purchased in the Gallery's sales shops; a written text is available without charge.

Tuesday through Saturday 12:00 p.m.
Sunday 2:00 p.m.

October 31–November 5

Henri Matisse
*Woman Seated in an
Armchair*
(Given in loving memory of
her husband, Taft Schreiber,
by Rita Schreiber)
East Building, Upper Level

Margaret O'Neil, Lecturer



November 7–November 12

French School
(after Bernini)
Louis XIV
(Samuel H. Kress
Collection)
West Building,
West Sculpture Hall

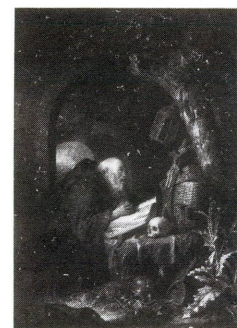
Philip Leonard, Lecturer



November 14–November 19

Gerald Dou
The Hermit
(Timken Collection)
West Building
Gallery 49

Marilyn B. Brockway,
Lecturer



November 21–November 26

Linton Park
Flax Scutching Bee
(Gift of Edgar William and
Bernice Chrysler Garbisch)
West Building, Ground
Floor Central Gallery

Julie Springer, Lecturer



(There will be no talk on
Thanksgiving Day, Nov. 23)

SPECIAL TOURS

One-hour thematic tours given by
Education Department lecturers.

Tuesday through Saturday 1:00 p.m.
Sunday 2:30 p.m.

October 31–November 5

*Decorative Arts:
The Changing Context*
West Building, Rotunda

Frances Feldman, Lecturer

November 7–November 12

*Nineteenth-Century
American Landscape*
West Building, Rotunda

Donna Mann, Lecturer

November 14–November 19

Frans Hals
West Building, Rotunda

Lynn P. Russell, Lecturer

November 21–November 26

*Italian Etchers of the
Renaissance and Baroque*
East Building,
Ground Floor Lobby

Dennis P. Weller, Lecturer

(There will be no tours on
Thanksgiving Day, Nov. 23)

FILMS

Free films on art and feature films related
to special exhibitions. Unreserved seats
are available on a first-come, first-served
basis.

East Building Auditorium

October 30–November 5

Emily Dickinson (Lawrence
Pitkethly, 1987, 60 min.)
Wed. through Sat. 12:30

*The Landscapes of Frederic
Edwin Church* (National
Gallery of Art, 1989,
27 min.)
Mon., Wed. through Fri. 2:00
Sun. 1:00

Die Patriotin (Alexander
Kluge, 1979, 121 min.)
Sat. 2:30

The Power of Emotion
(Alexander Kluge, 1983,
115 min.)
Sun. 6:00



Nosferatu, F. W. Murnau, 1922, to be shown
November 18 (Museum of Modern
Art/Stills Archive)

November 6–November 12

*Saint-Gaudens: Masque of
the Golden Bowl* (T. W.
Timreck, 1985, 60 min.)
Wed. through Sat. 12:30

*The Landscapes of Frederic
Edwin Church* (National
Gallery of Art, 1989,
27 min.)
Mon., Wed. through Fri. 2:00
Sun. 1:00

The Blind Director
(Alexander Kluge, 1985,
113 min., introduced on
Sat. by Stuart Liebman)
Sat. 2:00; Sun. 6:00

November 13–November 19

*The Ten Year Lunch: The
Wit and Legend of the
Algonquin Round Table*
(Aviva Slesin, 1987,
60 min.)
Wed. through Sat. 12:30

*The Landscapes of Frederic
Edwin Church* (National
Gallery of Art, 1989,
27 min.)
Mon., Wed. through Fri. 2:00
Sun. 1:00 and 6:00

Nosferatu (F. W. Murnau,
1922, 98 min., introduced
by Peter Brunette)
Sat. 2:00

Scherben (Lupu Pick, 1921,
55 min.) and *Waxworks*
(Paul Leni, 1924, 61 min.)
Sun. 7:00

November 20–November 26

Portrait of Frans Hals
(Frans Dupont, 1964, 18
min.) and *Piet Mondrian, A
Film Essay* (Nico Crama,
1973, 18 min.)
Wed., Fri., Sat. 12:30

*The Landscapes of Frederic
Edwin Church* (National
Gallery of Art, 1989,
27 min.)
Mon., Wed., Fri. 2:00
Sun. 1:00 and 6:00

Destiny (Fritz Lang, 1921,
122 min.)
Sat. 2:00

Variety (E. A. Dupont,
1925, 110 min.)
Sun. 7:00



Variety, E. A. Dupont, 1925, to be
shown November 26 (Museum of
Modern Art/Stills Archive)

SUNDAY LECTURES

Free lectures given by distinguished
visiting scholars. No reservations needed
but seating is limited.

Sunday 4:00 p.m.
East Building Auditorium

November 5

*Piero della Francesca:
Artist of the Universal and
the Particular*

Marilyn Aronberg Lavin
Professor,
Princeton, New Jersey

November 12

*German Expressionism in
the Context of the
European Avant-Garde*

Peter Selz
Professor Emeritus,
Department of History of
Art, University of
California, Berkeley

November 19

*The King's Able Body:
Style and Meaning in
Sumerian Statues*

Irene Winter
Professor of Ancient Near
Eastern Art, Harvard
University, Cambridge,
Massachusetts

November 26

*State Portraiture in
Renaissance Italy:
The Shaping of Signorial
Identity*

Joanna Woods-Marsden
Assistant Professor,
Art History Department,
University of California,
Los Angeles

SUNDAY CONCERTS

Free concerts by the National Gallery
Orchestra, recitalists, and ensembles.
Unreserved seats available from 6:00 p.m.
All concerts are broadcast live by WGMS
570 AM and 103.5 FM

Sunday 7:00 p.m.
West Building, West Garden Court

November 5

National Gallery Vocal Arts
Ensemble; George Manos,
Artistic Director

Early English and Italian
vocal chamber music by
Henry VIII, Morley,
Campion, di Lasso, Vecchi,
and others

November 12

National Gallery Orchestra
George Manos, *Conductor*

Works by Chabrier,
Debussy, Creston, and
Prokofiev

November 19

Canadian Piano Trio

Works by Mozart, Brahms,
and Smetana

November 26

Agi Rado, *piano*

Works by Beethoven,
Chopin, and Kodaly

Film Programs

East Building Auditorium

"The Films of Alexander Kluge," an eight-part retrospective of the work of this German director, concludes on November 11 and 12 with *The Blind Director* (1985). On Saturday, November 11, Stuart Liebman, professor in the department of communication arts and sciences, Queens College, City University of New York, will introduce the program and lead a post-screening discussion. The series has been organized in cooperation with Goethe House New York.

Beginning Saturday, November 18, and continuing through the end of January, "A Kabinett of German Cinema: 1921-1981" will feature a selection of representative styles and themes in German filmmaking. The series opens with the expressionist *Nosferatu* (F.W. Murnau, 1922) in a 35mm print from the Munich Film Museum. On Sunday, November 19, the rarely seen *Scherben* (Lupu Pick, 1921), an example of the *Kammerspiel* film, will be screened along with *Waxworks* (Paul Leni, 1924), an expressionistic horror film. The series has been organized in collaboration with Peter Brunette, professor of English at George Mason University, and Robert Kolker, professor in the department of radio-television-film at the University of Maryland.

Survey Course on Western Art

The Education Department continues its survey course on the history of Western Art. This series examines the development of painting and sculpture from the ancient world to the twentieth century. Lectures by Education staff will be held in the East Building Auditorium at 11:15 a.m. on Mondays and 11:00 a.m. on Saturdays. This free program is open to the public but seating is limited.

October 30, November 4	<i>Neoclassicism and Romanticism</i>
November 13, 18	<i>American Art, 1700-1900</i>
November 27, December 2	<i>Realism and Impressionism</i>

INTRODUCTORY TOURS

Introduction to the West Building Collections

Monday through Saturday 3:00 p.m.
Sunday 5:30 p.m.

West Building, Rotunda

Introduction to the East Building Collections

Monday through Friday 11:30 a.m.
Saturday 11:00 a.m.
Sunday 12:30 p.m.

East Building, Ground Floor Lobby

Gallery Talks

The talks are given by members of the museum staff and by Graduate Lecturing Fellows in the Education Department. All talks begin at 2:00 p.m.

From Donor to Hieroglyph in Italian Renaissance Portraiture
Wednesday, November 1
Thomas E. A. Dale
Graduate Lecturing Fellow
Meet in the West Building Rotunda

The Beginnings of Abstract Painting
Saturday, November 4
Wednesday, November 29
Barbara Baxter
Graduate Lecturing Fellow
Meet at the East Building Information Desk

From Icon to Altarpiece
Saturday, November 11
Saturday, November 18
Thomas E. A. Dale
Graduate Lecturing Fellow
Meet in the West Building Rotunda

Jasper Johns: Painting on Painting
Wednesday, November 15
Barbara Baxter
Graduate Lecturing Fellow
Meet at the East Building Information Desk

Presence Among Us: Portrait Busts of the Italian Renaissance
Saturday, November 25
Alison Luchs
Assistant Curator of Sculpture
Meet in the West Building Rotunda

Recorded Tours

A recorded tour of the West Building collections, narrated by J. Carter Brown, Director, is available at the Ground Floor Sales Area.

Also available at the Ground Floor Sales Area are recorded tours of the National Gallery's permanent collection of American painting and French art in the Chester Dale collection.

A recorded tour of *Twentieth-Century Painting and Sculpture* is available in two parts at the East Building publications desk, Concourse Level.

A recorded tour of *Frederic Edwin Church* is available at the entrance to the exhibition.

A recorded tour of *Frans Hals* is available at the entrance to the exhibition.

Foreign Language Tours

Regularly scheduled foreign language tours of the West Building are offered on Tuesdays at noon beginning in the Rotunda.

November 7	<i>French</i>
November 14	<i>Spanish</i>
November 21	<i>German</i>
November 28	<i>Italian</i>

OPENING EXHIBITION

Expressionism and Modern German Painting from the Thyssen-Bornemisza Collection

East Building, Mezzanine
November 19, 1989-January 14, 1990

The National Gallery of Art is the first American venue for the exhibition of modern German paintings from the collection formed by Baron Hans Heinrich Thyssen-Bornemisza. There are thirty-four paintings representing nineteen artists including Ernst Ludwig Kirchner, Wassily Kandinsky, Emil Nolde, Erich Heckel, Otto Dix, and Franz Marc. These colorful works were selected from the Baron's collection of modern and old master paintings which are now on view at his home, Villa Favorita, in Lugano, Switzerland. It is the first exhibi-

CONTINUING EXHIBITIONS

Italian Etchers of the Renaissance and Baroque

Through November 26, 1989
East Building, Ground Floor

This exhibition, comprising one hundred thirty prints, ten drawings, and ten illustrated books, explores the development of the etching medium in Italy from the beginning of the sixteenth to the end of the seventeenth century. Selected from public and private collections, in the U.S. and in Europe, the show features such accomplished Italian artists as Parmigianino, Federico Barocci, Annibale Carracci, Stefano della Bella, and Salvator Rosa, as well as important foreign artists working in Italy, such as Jusepe de Ribera, Jacques Callot, and Claude Lorrain.

Italian Etchers was organized by the Museum of Fine Arts, Boston, where it premiered, and traveled to the Cleveland Museum of Art before coming to the Gallery. The exhibition and catalogue in Boston were made possible by Fabriano Paper Mill, Italy. Generous funding has also been provided by the National Endowment for the Arts. The exhibition at the National Gallery is made possible by Mellon Bank.



Frans Hals, *The Rommel Pot Player*, c. 1618-1622, Kimbell Art Museum, Fort Worth

tion devoted entirely to the expressionist paintings in the collection.

Expressionism and Modern German Painting has been organized by the Thyssen-Bornemisza Foundation in collaboration with the National Gallery of Art and the Kimbell Art Museum, Fort Worth. A fully illustrated color catalogue accompanies the exhibition. After its showing at the Gallery, the exhibition will travel to the Kimbell Art Museum in Fort Worth, January 26 to March 25, 1990, and to the California Palace of the Legion of Honor, The Fine Arts Museums of San Francisco, April 18 to July 1, 1990.

American Naive Paintings from the National Gallery of Art

Through December 17, 1989
West Building, Central Gallery

More than sixty paintings from the National Gallery's collection of naive American art are on view for the first time in over three years after touring throughout the United States and Europe. The selection comes from the more than three hundred paintings that were given to the Gallery by Edgar William and Bernice Chrysler Garbisch. In addition to several well-known anonymous works, the exhibition includes paintings by such important figures as Edward Hicks, Erastus Salisbury Field, William Matthew Prior, and Joshua Johnson.

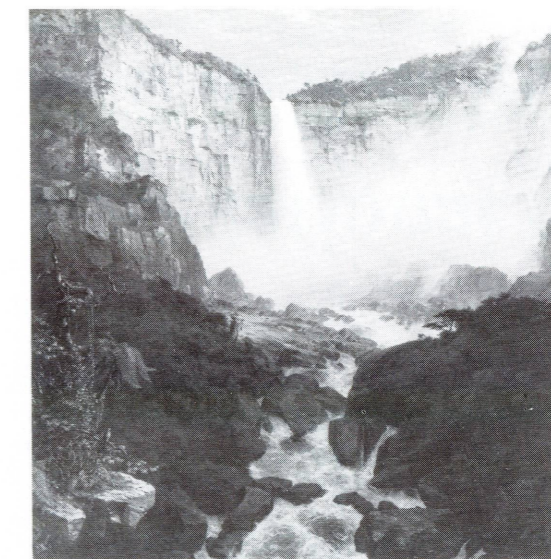
Frans Hals

Through December 31, 1989
West Building, Main Floor Galleries

Frans Hals, an exhibition of one of the great portrait painters in the history of art, features more than sixty paintings and small oil sketches drawn from all phases of his remarkable career. This is the first major showing of Hals' work to appear outside the Netherlands. Examples of his work include his earliest known painting, a portrait of *Jacobus Zaffius*, genre scenes, among them *Merry Drinker*, family portraits, his militia portrait of the so-called *Meagre Company*, and his remarkable late group portraits of the regents and regentesses of the Old Men's Alms House in Haarlem.

The exhibition has been organized by the Royal Academy of Arts, London, in association with the National Gallery of Art, and the Frans Halsmuseum in Haarlem, the Netherlands. The Gallery will be the first venue for the show and the only one in the United States. A fully illustrated catalogue accompanies the exhibition which is supported at the National Gallery by a generous grant from Republic National Bank of New York. The exhibition is also supported by an indemnity from the Federal Council on the Arts and the Humanities.

CONTINUING EXHIBITIONS



Frederic Edwin Church, *Tequendema Falls, near Bogota, New Granada* (detail), 1854, Cincinnati Art Museum, The Edwin and Virginia Irwin Memorial

Frederic Edwin Church

Through January 28, 1990
East Building, Mezzanine
and Upper Level

Frederic Edwin Church is a major exhibition of forty-nine of the artist's finest paintings. Considered the preeminent landscape painter of mid-nineteenth-century America, Church was greatly inspired not only by the scenery of America—the Catskills, the Berkshires, Virginia, Vermont, and Maine, but also by the tropics of South America and the exotic landscapes of the Near East. The exhibition, which will not travel, presents for the first time as a group Church's famous, large-scale paintings including *Niagara, Heart of the Andes, Twilight in the Wilderness, The Icebergs, Cotopaxi, Aurora Borealis, Jerusalem from the Mount of Olives*, and the National Gallery's own *Morning in the Tropics*.

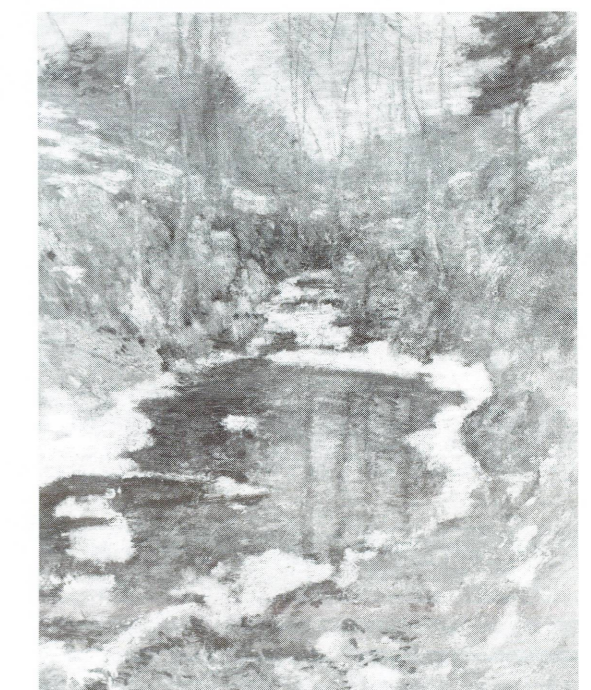
A 216-page, fully illustrated catalogue published by the National Gallery accompanies the exhibition.

John Twachtman: Connecticut Landscapes

Through January 28, 1990
East Building, Ground Floor

Twenty-six paintings, created by John Henry Twachtman between 1889 and 1901 on his farm in Greenwich, Connecticut, and other nearby locations, are on view in the East Building. During his Greenwich period Twachtman chose to explore a single location under various kinds of light, and at different times of the year. His sensitive evocations of time and place made him one of the most respected of all of the American impressionists. The exhibition includes the National Gallery's *Winter Harmony*, a work that reflects Twachtman's interest in the quiet poetry and delicate colors of winter scenes.

John Twachtman: Connecticut Landscapes is the third in a series of exhibitions of American impressionists at the National Gallery. The series, supported over the last three years by Bell Atlantic, also celebrated the achievements of William Merritt Chase in 1987 and Childe Hassam in 1988. A 120-page, fully illustrated exhibition catalogue published by the National Gallery is available.



John Twachtman, *Hemlock Pool*, c. 1900, The Addison Gallery of American Art, Phillips Academy, Andover, Massachusetts

Current Exhibition Catalogues

Italian Etchers of the Renaissance and Baroque \$34.50

Frans Hals \$35.00

Frederic Edwin Church \$19.95

John Twachtman: Connecticut Landscapes \$17.95

Available from the National Gallery Publications Service
Sales Information (202) 842-6466
Mail Orders (301) 322-5900

A wide variety of newly released greeting cards, calendars, exhibition catalogues, and books are available for the holiday season. All merchandise is available in the stores, or by phone (301) 322-5900.

Twentieth-Century Art: Selections for the Tenth Anniversary of the East Building

Through December 31, 1990
East Building
Concourse, Upper Level, and Tower

To celebrate the tenth anniversary of the East Building of the National Gallery of Art in 1988, a series of twenty-five new galleries was designed and built to accommodate a greatly expanded installation of the twentieth-century collection, complemented by a number of major loans from private collections. The Upper Level includes art from the beginning of the century to World War II. Fourteen works by David Smith are displayed in the skylit space of the Tower Gallery. Postwar European and American art can be seen on the Concourse Level.

Two publications have been produced by the National Gallery in conjunction with the exhibition. The installation is made possible by a grant from American Express Company.

NATIONAL GALLERY OF ART
Washington, D.C. 20565

GENERAL INFORMATION

GALLERY HOURS

Monday through Saturday 10:00 a.m. to 5:00 p.m.

Sunday noon to 9 p.m.

The telephone number for general information
is (202) 737-4215.

To change your mailing address for the Calendar of Events,
please mail a copy of your new address to the Information
Office, National Gallery of Art, Washington, D.C. 20565,
taking care to include the mailing label from your last
Calendar of Events.

The Gallery is located between 3rd and 7th Streets, N.W., on
Constitution Avenue. The East and West Buildings are
connected by an all-weather underground passage with a
moving walkway. Entrances to the West Building are on the
Mall, on 7th Street, on Constitution Avenue at 6th Street,
which has a ramp for the handicapped, and off 4th Street. The
entrance to the East Building is on 4th Street off National
Gallery Plaza and also has a ramp for the handicapped.

RESTAURANTS

Four restaurants offer luncheon and light snacks throughout
the year. Hours of operation are:

TERRACE CAFE

Monday-Saturday	11:00 to 2:30 2:30 to 4:00 (dessert service)
Sunday	12:00 to 4:00

CONCOURSE BUFFET

Monday-Saturday	10:00 to 4:00
Sunday	12:00 to 6:00

CASCADE CAFE

Monday-Friday	Closed
Saturday	11:30 to 2:30 2:30 to 4:30 (dessert service)
Sunday	12:00 to 3:30

GARDEN CAFE

Monday-Saturday	11:00 to 4:00 4:00 to 4:30 (dessert service)
Sunday	12:00 to 5:00 5:00 to 7:30 (concert supper)

COVER: Franz Marc, *The Dream*, 1912, Thyssen-
Bornemisza Collection