



National Gallery of Art

CALENDAR OF EVENTS

November 1985

NOVEMBER

Monday, October 28
through
Sunday, November 3

Monday, November 4
through
Sunday, November 10

Monday, November 11
through
Sunday, November 17

Monday, November 18
through
Sunday, November 24

COLLECTION HIGHLIGHTS OF THE WEEK

Brief gallery talks on a single work of art. Reproductions of the work of art discussed may be purchased in the Gallery's sales shops; a written text is available without charge.

Tuesday through Saturday 12:00 p.m.
Sunday 2:00 p.m.

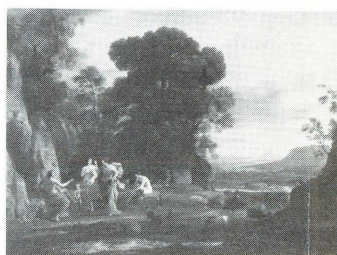
October 29-November 3

Jan Gossaert (Mabuse)
Saint Jerome Penitent
(Samuel H. Kress
Collection)
West Building
Gallery 41



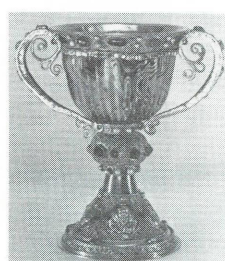
November 5-November 10

Claude Lorrain
The Judgment of Paris
(Ailsa Mellon Bruce Fund)
West Building
Gallery 52



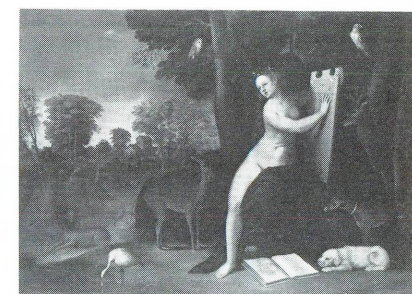
November 12-November 17

French
*Chalice of Abbot Suger
of Saint-Denis*
(Widener Collection)
West Building
Ground Floor North 2



November 19-November 24

Dosso Dossi
*Circe and Her Lovers
in a Landscape*
(Samuel H. Kress
Collection)
West Building
Gallery 25



SPECIAL TOURS OF THE WEEK

Fifty-minute tours on related works of art.
Tuesday through Saturday 1:00 p.m.
Sunday 5:30 p.m.

October 29-November 3

*English Taste:
The Portrait Tradition*
West Building
Rotunda

November 5-November 10

*English Taste:
The Grand Tour*
West Building
Rotunda

November 12-November 17

*English Taste:
Dutch Painting*
West Building
Rotunda

November 19-November 24

*English Taste:
Chinoiserie and Porcelain*
West Building
Rotunda

FILMS

Free films on art and feature films related to special exhibitions. Unreserved seats are available on a first-come, first-served basis.
East Building Auditorium

October 30

*In a Brilliant Light:
Van Gogh in Arles*
(60 min.)
Wed. 12:30



The Go-Between, 1975, to be shown
November 15, 16, 17 (Museum of
Modern Art/Film Stills Archive)

November 6-November 10

*The Making of the English
Landscape: An Exploration
with W.G. Hoskins*
(52 min.)
Wed. through Sat. 12:30
Sun. 1:00

Royal Heritage, part one
(60 min.)
Wed. through Fri. 2:00

Spirit of the Age,
part one (50 min.)
Wed. through Fri. 3:30

*The English House on
Film* (lecture)
Sat. 2:30

The Innocents
(1961, 100 min.)
Sun. 6:00

November 12-November 17

An Edwardian Childhood
(27 min.) and
The British Achievement
(29 min.)
Wed. through Fri. 12:30
Sun. 1:00

Royal Heritage, part two
(60 min.)
Tues. through Thurs. 2:00

Spirit of the Age,
part two (50 min.)
Tues. through Thurs. 3:30

The Go-Between
(1971, 116 min.)
Fri. 2:30, Sat. 12:30
Sun. 6:00

November 19-November 24

*Erddig: A Welsh Estate
Revived* (40 min.) and
The English Garden, part one
(26 min.)
Wed. through Sat. 12:30
Sun. 1:00

Royal Heritage, part three
(60 min.)
Tues. through Thurs. 2:00

Spirit of the Age,
part three (50 min.)
Tues. through Thurs. 3:30

Blanche Fury (1947, 95 min.)
and *Jassy* (1947, 96 min.)
Fri. and Sat. 2:30
Sun. 6:00



Margaret Lockwood in *Jassy*, 1947,
to be shown November 22, 23, and
24 (Museum of Modern Art/Film
Stills Archive)

SUNDAY LECTURE

Free lectures by distinguished visiting scholars. No registration needed but seating is limited.

Sunday 4:00 p.m.
East Building Auditorium

November 3

*Temples of the Arts:
British Country Houses
and Their Creators*

Gervase Jackson-Stops
Curator
*The Treasure Houses
of Britain*
National Gallery of Art

November 10

*The Power Houses:
Politics and Status
in the Country House*

Mark Girouard
Architectural Historian
London

November 17

*Politics, Poetry and the
English Landscape Garden*

Judith Colton
Associate Professor
of the History of Art
Yale University
New Haven

November 24

*The Survival of the
English Country House*

Martin Drury
Historic Buildings
Secretary
The National Trust
London

Sèvres, Vase "pot-pourri à
dauphin," Boughton House,
Northamptonshire, The Duke of
Buccleuch and Queensberry, KT
from *The Treasure Houses of Britain*



SUNDAY CONCERTS

*44th Season of the
National Gallery Concerts*
Free concerts by the National Gallery
Orchestra, recitalists, and ensembles.
Unreserved seats available from 6:00 p.m.
All concerts are broadcast live by WGMS
570 AM and 103.5 FM.
Sunday 7:00 p.m.
West Building, East Garden Court

November 3

National Gallery Orchestra

George Manos, *Conductor*

All English program in honor
of *The Treasure Houses
of Britain* exhibition

November 10

Washington Music Ensemble

Jerome Barry, *Baritone*
Elizabeth Kirkpatrick,
Soprano
Allan Mandel, *Pianist*
Jan Pompilo, *Flutist*
Mary Findley, *Violinist*

All French program

November 17

Bradford Gowen, *Pianist*

Mixed program including
British music in honor of
*The Treasure Houses of
Britain* exhibition

November 24

The Music Group of London
Piano Trio

Eileen Croxford, *Cellist*
Hugh Bean, *Violinist*
David Parkhouse, *Pianist*

Mixed program, English
and traditional

Special Course

Taste and Treasures:
An Introduction
to the British Country House
November 5-December 21, 1985

A seven-week series of free slide lectures will examine the country house phenomenon from a variety of viewpoints, including the history of patronage and collecting and the development of architectural styles.

The lectures are offered on Tuesdays at 12:30 p.m. and on Saturdays at 11:00 a.m. in the East Building Auditorium. No reservations are required, but space is limited.

- November 5, 9: *What is a Country House?*
November 12, 16: *Elizabethan and Jacobean Prodigy Houses*
November 19, 23: *The English Baroque Country House*
November 26, 30: *The Dignified Palladian House*
December 3, 7: *The Age of Robert Adam*
December 10, 14: *The Regency House and the French Revolution*
December 17, 21: *The Victorian Country House*

PBS Series on
The Treasure Houses of Britain

A series of three one-hour television specials presented by WETA/26 to coincide with *The Treasure Houses of Britain* exhibition will air over PBS on three Mondays in December. The programs will give television viewers unprecedented access to some of Great Britain's most magnificent country houses. In Washington, the series will air on WETA on December 16 at 9:00 p.m.; on December 23 at 10:00 p.m.; and on December 30 at 9:00 p.m. For other areas, check local listings. Cassettes of the programs will be available in the Publications sales areas after they have aired.

Foreign Language Tours

Regularly scheduled tours of the West Building collections are offered on Tuesdays in the following foreign languages: the first Tuesday of the month, in French; the second Tuesday, in Spanish; the third Tuesday, in German; the fourth Tuesday, in Italian. Tours begin in the West Building Rotunda at noon. Tours in other foreign languages can be scheduled by calling the Education Department at 202/842-6249. The tours for November are as follows:

- November 5: *General Tour in French*
November 12: *General Tour in Spanish*
November 19: *General Tour in German*
November 26: *General Tour in Italian*

INTRODUCTORY TOURS

Introduction to the
East Building Collections

Mon. through Sat. 11:00 a.m.
Sun. 1:00 p.m.
East Building, Ground Floor Lobby

Special Lecture

The Country House on Film
November 9, 1985

British film historian William K. Everson will lecture on how the English fascination with house and garden has been reflected in British films. Excerpts from a number of motion pictures will be shown.

Saturday, 2:30-4:00 p.m.
East Building Auditorium



Hardwick Hall, Derbyshire
(National Gallery of Art/James Pipkin)

Film Series

Throughout the run of the exhibition *The Treasure Houses of Britain* the Gallery is presenting a festival of films relating to the British country house, its architecture, its gardens, and its use as a motif in feature films. The series is supported by a grant from the Ford Motor Company. See reverse side for films being shown in November.

Family Programs

The Education Department is pleased to continue the popular new programs for families with children ages six to twelve. The programs are offered free on Saturday mornings and last approximately 1½ hours. The programs begin in the West Building Auditorium at 10:00 a.m. with a short film or activity to be followed by a tour. Advance registration is required; call 202/842-6249 for reservations. Children must be accompanied by an adult.

- November 2: *Fit for a King (Furniture, Jewels, Tapestries, Helmets)*
November 9: *Fit for a King*
November 16: *Fit for a King*
November 23: *The Christmas Story in Art*
November 30: *The Christmas Story in Art*

Introduction to the
West Building Collections

Mon. through Sat. 3:00 p.m.
Sunday 5:00 p.m.
West Building, Rotunda

The Treasure Houses of Britain:
Five Hundred Years of Private
Patronage and Art Collecting

November 3, 1985-March 16, 1986
Mezzanine, Terrace, Upper Level,
and Bridge
East Building

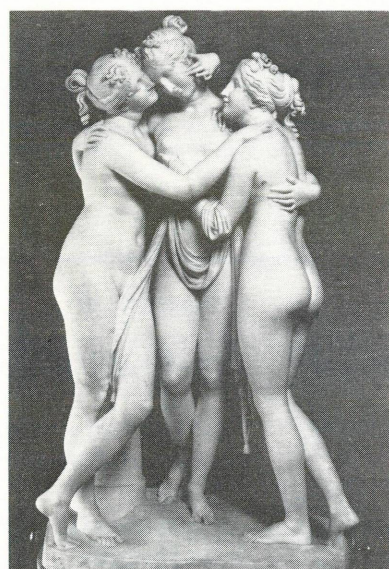
The National Gallery of Art opens this month the largest single temporary exhibition it has undertaken. From over 200 country houses in England, Scotland, Wales, and Northern Ireland, more than 700 art objects have been assembled. Made possible by a generous grant from the Ford Motor Company, the exhibition spans 500 years of British collecting from the fifteenth century to the present.

Included in the exhibition are paintings by such artists as Rubens, Velasquez, Van Dyck, Canaletto, and Sargent; sculpture by Praxiteles, Canova, and Henry Moore; furniture by Kent and Chippendale; porcelain, drawings; tapestry; jewelry; armor; silver; and other decorative arts. The works have been selected by Gervase Jackson-Stops, architectural advisor to the National Trust and curator of the exhibition.

Seventeen rooms have been constructed in 35,000 square feet of space to exhibit the works of art. The rooms progress chronologically, beginning with collecting in the Tudor Renaissance (1485) and ending with "Edwardian Elegance and the Continuing Tradition" which brings the exhibition into the twentieth century. The design of certain rooms evokes the ambiance of a room of that period; details such as moldings and wall color have often been based on a particular room in a country house or on a painting of the period. In a special room at the conclusion of the exhibition is the famous Dolls' House from Nostell Priory, a miniature replica of a country house which is attributed to Thomas Chippendale and which is complete with all its original furnishings dating from the 1740s.

Extended Hours

Regular museum hours are 10:00 a.m. to 5:00 p.m., Mondays through Saturdays and noon to 9:00 p.m. on Sundays. For *The Treasure Houses of Britain* exhibition hours have been extended on Mondays through Saturdays until 7:00 p.m. There is no charge for admission to the National Gallery or to the exhibition. The *Treasure Houses* information telephone number is 202/842-6672.



Antonio Canova, *The Three Graces*
Woburn Abbey, Bedfordshire, The Marquess of Tavistock and the Trustees of the Bedford Estates



Sir Anthony van Dyck, *Lord John Stuart with His Brother Lord Bernard Stuart*
Broadlands, Hampshire, Lady Pamela Hicks

Passes to the Exhibition

During crowded times, admittance to the exhibition is by a pass system timed to the half hour. Free passes for the current day can be obtained at the Exhibition Desk on the Ground Level of the East Building on a first-come, first-served basis. Groups of twenty or more may reserve passes in advance by writing the National Gallery's Education Department or calling 202/842-6246. Entry is every half hour; please specify preferred time.

A limited number of mail order reservations for individuals is now also available. To make reservations, please send a written request two weeks before your preferred date. Specify the date and time for your visit. You must enclose a stamped, self-addressed envelope for confirmation, and your pass will be held in your name. Send your request to:

THB Reservations
Education Department
National Gallery of Art
Washington, D.C. 20565

An ample number of passes will be kept available for visitors without previous reservations.

Recorded Tour

A recorded tour narrated by J. Carter Brown, Director of the National Gallery, is available at a nominal cost. Special rates for groups may be arranged by calling 202/842-6246.

Exhibition Catalogue

The catalogue for *The Treasure Houses of Britain*, edited by the exhibition curator, Gervase Jackson-Stops, has been copublished by the National Gallery of Art and Yale University Press, New Haven and London. The 682-page catalogue contains essays and entries by 44 contributors and is illustrated by 693 colorplates of the works of art in the exhibition. Catalogues are available by mail through the Publications Service, National Gallery of Art, Washington, D.C. 20565. The price for the softbound edition is \$20.00 (mail orders only); please include an additional \$2.00 per order to cover shipping costs. Specify order no. 45-44-633.

Dürer to Delacroix:
Great Master Drawings
from Stockholm

Through January 5, 1986
Ground Floor Galleries
West Building

A selection of 118 master drawings from the Nationalmuseum, Stockholm, is on view. Artists represented in the exhibition include Dürer, Rembrandt, Rubens, Van Dyck, Goya, Raphael, Poussin, Fragonard, Watteau, and Delacroix. The exhibition in Washington is being supported by Volvo North America Corporation.



Rembrandt van Rijn, *Portrait of Titia van Uylenburgh*
Nationalmuseum, The National Swedish Art Museums, Stockholm

German Expressionist Prints
from the Collection of
Ruth and Jacob Kainen

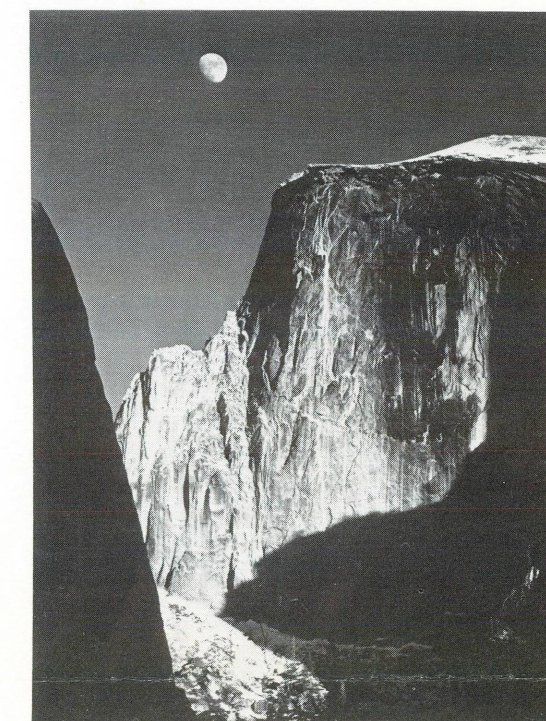
Through February 9, 1986
Ground Floor
East Building

Ninety prints from the Ruth and Jacob Kainen Collection—one of the finest groups of German Expressionist prints still in private hands—are exhibited publicly for the first time together. The exhibition focuses on the works of Ernst Ludwig Kirchner, with additional attention to the artists of Die Brücke and to German printmakers of the 1920s.

Ansel Adams: Classic Images

Through January 12, 1986
Ground Floor Galleries
West Building

The museum set, seventy-five of Ansel Adams' finest images, selected by the artist himself to represent the highest quality of his artistic achievement, is on view. These works are accompanied by a group of rarely seen mural-size photographs from the Collection of Virginia Best Adams. The exhibition is made possible by a grant from Pacific Telesis Group.



Ansel Adams, *Moon and Half Dome*,
Yosemite Valley, California
Courtesy of the Trustees of the Ansel Adams
Publishing Rights Trust



Max Pechstein, *Variety Dancer*
The Ruth and Jacob Kainen Collection

IN THE WEST BUILDING PRINTS AND DRAWINGS GALLERIES

Composition Drawings
from the National
Gallery's Collection

Through February 16, 1986

Figure Prints
from the National
Gallery's Collection

Through February 16, 1986

GENERAL INFORMATION

NATIONAL GALLERY OF ART
Washington, D.C. 20565

The telephone number for general information
is 202/737-4215.

GALLERY HOURS:

Monday through Saturday 10:00 a.m. to 5:00 p.m.

Sunday 12 noon to 9:00 p.m.

East Building open Monday through Saturday
10:00 a.m. to 7 p.m.

The Gallery is located between 3rd and 7th
Streets, N.W., on Constitution Avenue. The East
and West Buildings are connected by an all-
weather underground passage with a moving
walkway. Entrances to the West Building are on
the Mall, on 7th Street, on Constitution Avenue
at 6th Street, which has a ramp for the handi-
capped, and off 4th Street. The entrance to the
East Building is on 4th Street off National Gallery
Plaza and also has a ramp for the handicapped.

RESTAURANTS

Four restaurants offer luncheon and light snacks
throughout the year. Monday through Saturday,
hours of operation are:

Terrace Café: 11:00 to 6:00

Café/Buffer: 10:00 to 6:00

Cascade Café: 11:00 to 3:30

Garden Café: 11:00 to 4:30

Sunday hours are 12 noon to 7:00 p.m. for the
Terrace Café, Café/Buffer, and Garden Café;
12 noon to 6:00 p.m. for the Cascade Café.

COVER: William Frederick Witherington,
A Fête at Petworth
Petworth House, Sussex, The National Trust
(Egremont Collection)