



National Gallery of Art

CALENDAR OF EVENTS

July 1986

JULY

Monday, June 30
through
Sunday, July 6

Monday, July 7
through
Sunday, July 13

Monday, July 14
through
Sunday, July 20

Monday, July 21
through
Sunday, July 27

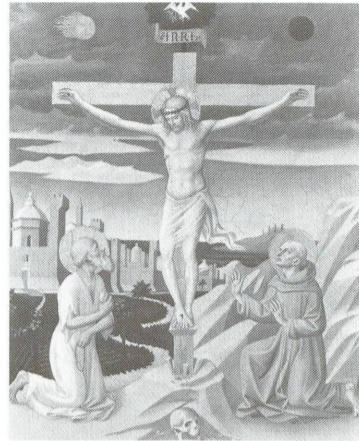
COLLECTION HIGHLIGHTS

Brief gallery talks on a single work of art. Reproductions of the art discussed may be purchased in the Gallery's sales shops; a written text is available without charge.

Tuesday through Saturday 12:00 p.m.
Sunday 2:00 p.m.

July 1-July 6

Francesco Pesellino
*The Crucifixion with
Saint Jerome and
Saint Francis*
(Samuel H. Kress
Collection)
West Building
Gallery 4



July 8-July 13

Claude Monet
The Seine at Giverny
(Chester Dale Collection)
West Building
Gallery 90



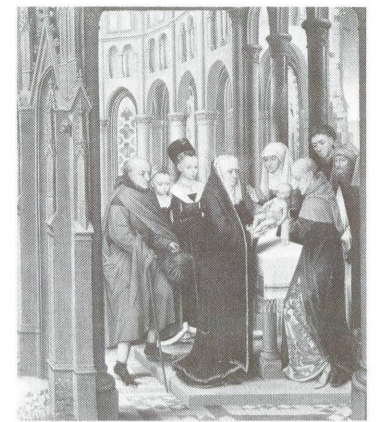
July 15-July 20

Thomas Cole
*The Notch of the
White Mountains*
(Crawford Notch)
(Andrew W. Mellon Fund)
West Building
Gallery 67



July 22-July 27

Master of the Prado
Adoration of the Magi
*The Presentation in
the Temple*
(Samuel H. Kress
Collection)
West Building
Gallery 39



SPECIAL TOURS

Fifty-minute tours on related works of art.
Tuesday through Saturday 1:00 p.m.
Sunday 2:30 p.m.

July 1-July 6

*French Paintings
in the Collection
of the National
Gallery of Art*
East Building
Ground Floor Lobby

July 8-July 13

*Myth and Matter:
Scenes of Mythology
in the Decorative
and Graphic Arts*
West Building
Rotunda

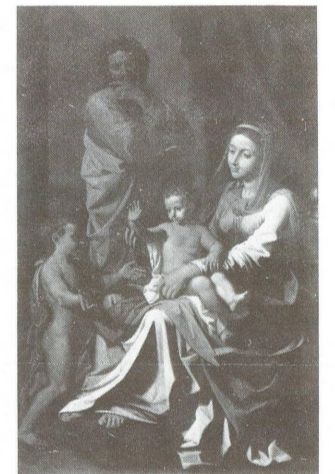
July 15-July 20

*Regeneration and
Rejuvenation: Summer's
Inspiration to Artists*
West Building
Rotunda

July 22-July 27

*Baroque Paintings
from the John and Mable
Ringling Museum of Art*
West Building
Rotunda

Nicolas Poussin, *The Holy Family
with the Infant Saint John*, 1655
John and Mable Ringling
Museum of Art



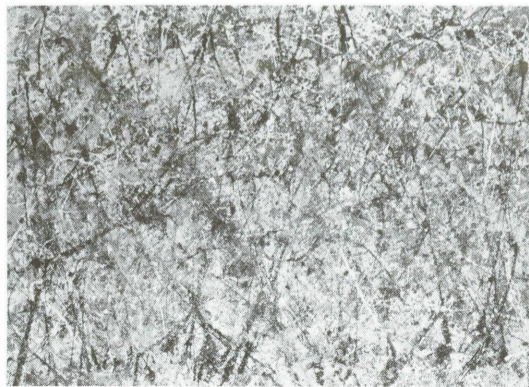
FILMS

Free films on art and feature films related to special exhibitions. Unreserved seats are available on a first-come, first-served basis.
East Building Auditorium

July 2-July 6

*Jackson Pollock:
Portrait* (54 min.)
Wed. through Sat. 12:30
Sun. 1:00

*Gertrude Stein: When This
You See Remember Me*
(90 min.)
Sat. 2:30



Jackson Pollock, *Number 1, 1950 (Lavender Mist)*
National Gallery of Art,
Ailsa Mellon Bruce Fund 1976

July 9-July 13

Lee Krasner, The Long View
(30 min.) and *David Smith,
American Sculptor,
1906-1965* (28 min.)
Wed. through Sat. 12:30
Sun. 1:00

*Picasso: Legacy of a
Genius* (44 min.) and
Simone de Beauvoir
(90 min.)
Sat. 2:30

July 16-July 20

Arshile Gorky (29 min.)
Wed. through Sat. 12:30
Sun. 1:00

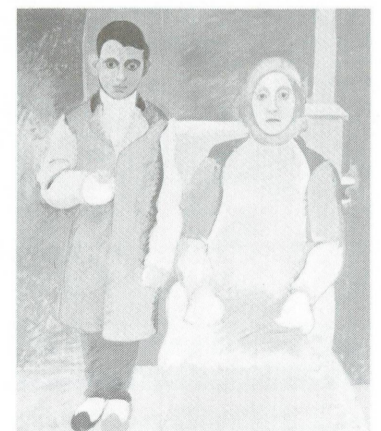
Georgia O'Keeffe
(60 min.)
Sat. 2:30

July 23-July 27

In Search of Rothko
(22 min.) and
De Kooning on De Kooning
(58 min.)
Wed. through Sat. 12:30
Sun. 1:00

Painters Painting (116 min.)
Sat. 2:30

Arshile Gorky, *The Artist and
His Mother*, c.1929-1936
National Gallery of Art,
Ailsa Mellon Bruce Fund 1979



SUNDAY LECTURES

Free lectures by given members of the Education Department. No registration needed but seating is limited.

Sunday 4:00 p.m.
East Building Auditorium

July 6

*Celebrated Cities:
Leningrad*

William J. Williams
Lecturer
National Gallery of Art

July 13

*Celebrated Cities:
Bruges*

Margaret O'Neil
Lecturer
National Gallery of Art

July 20

*Celebrated Cities:
Paris*

Marilyn Brockway
Lecturer
National Gallery of Art

July 27

*Celebrated Cities:
Florence*

Frances Feldman
Lecturer
National Gallery of Art

Jean Beraud, *Paris,
rue de Havre*, c.1882
National Gallery of Art,
Ailsa Mellon Bruce Collection 1970



National Gallery of Art

"Learning To Look" Discussion Groups

What does an artist do? How does art work? How did the artist make it? Small groups, comfortably seated around one or two objects from the permanent collection, will listen to lecturers from the National Gallery's Education Department explore the creative process. Participants will be encouraged to discuss the way in which artists use technique, composition, line, form, and color to achieve the effect they seek. Three discussion groups will be formed, one concentrating upon graphic media, another on painting, and a third on sculpture. Space is limited; to enroll, call the Education Department at 842-6246.

Prints and Drawings Discussion Group:
11:00 a.m., Wednesday, July 16, 23, 30.

Painting Discussion Group:
1:00 p.m., Thursday, July 17, 24, 31 and August 7.

Sculpture Discussion Group:
12:30 p.m. Thursday, August 14, 21, 28.

SUNDAY CONCERTS

The National Gallery Concert Series concluded on June 29 with a performance by the National Gallery Orchestra. In all, 11 concerts were presented by the Orchestra and 28 recitals ranging from piano, voice, and violin solos to trios, quartets, and vocal and instrumental ensembles. Eighteen artists and groups made their National Gallery debuts, and most concerts enhanced the various art exhibitions that were on view throughout the season.

The new National Gallery Vocal Arts Ensemble had its debut, as well as the consortium with the UMBC Camerata.

INTRODUCTORY TOURS

Introduction to the East Building Collections

Monday through Saturday 11:00 a.m.
Sunday 1:00 p.m.
East Building, Ground Floor Lobby

Summer Lectures on Celebrated Cities

Nine cities renowned for their artistic heritage will be the focus of the Sunday lectures this July and August. Staff lecturers from the Gallery's Education Department will discuss the cultural achievements and art historical importance of various famed centers. These illustrated lectures are given at 4:00 p.m. Sundays in the East Building Auditorium. See Calendar of Events listings for details.

July 6: *Leningrad* William J. Williams
July 13: *Bruges* Margaret O'Neil
July 20: *Paris* Marilyn Brockway
July 27: *Florence* Frances Feldman
August 3: *New York* Donna Mann
August 10: *Kyoto* Elizabeth Eder
August 17: *Beijing* Betsie Gross
August 24: *Siena* Susan M. Arensberg
August 31: *Berlin* Christopher B. With

The 43rd Annual American Music Festival presented eight concerts that included three First Performances in Washington, three World Premieres and scores of neglected American works.

Concerts will resume in the fall with opening concerts by the National Gallery Orchestra on October 5 and 12. All concerts are held in the West Building on Sunday evenings at 7 p.m. and are free to the public.

Introduction to the West Building Collections

Monday through Saturday 3:00 p.m.
Sunday 5:00 p.m.
West Building, Rotunda

No foreign language tours or family programs in July.

OPENING NEXT MONTH

Renaissance Master Bronzes from the Kunsthistorisches Museum, Vienna

August 17-November 30, 1986
East Building
Mezzanine

Seventy-five Italian and northern European bronzes of the 15th to the early 17th centuries have been selected from one of the world's greatest collections at the Kunsthistorisches Museum, Vienna. Opening August 17, the exhibition will include works by such artists as Filarete, Riccio, Antico, and Giambologna. Major artistic centers to be represented include Florence, Padua,

Mantua, Venice, and Nuremberg. The exhibition is being organized in cooperation with the Smithsonian Institution Traveling Exhibition Service (SITES). The selection of sculpture was made by Manfred Leithe-Jasper, head of the sculpture and decorative arts department, Kunsthistorisches Museum, and by C. Douglas Lewis, curator of sculpture at the National Gallery of Art.

OPENING EXHIBITION

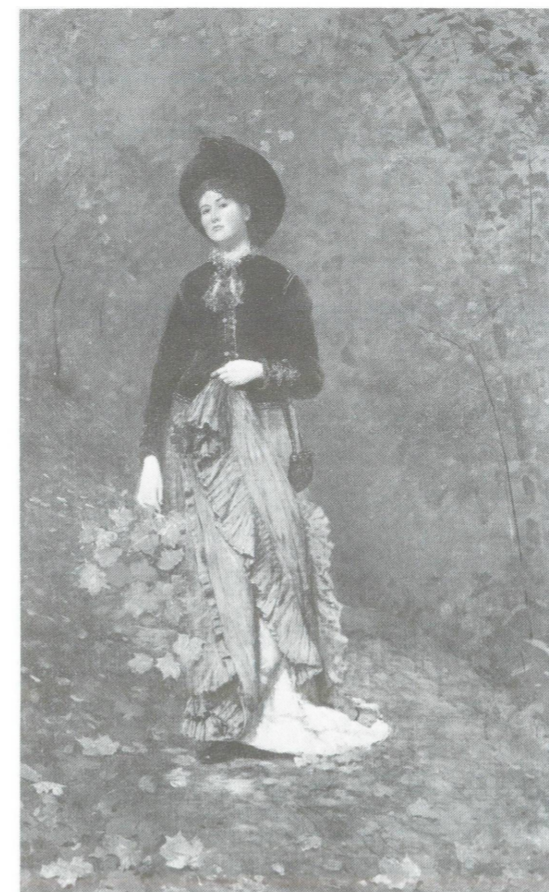
Gifts to the Nation: Selected Acquisitions from the Collections of Mr. and Mrs. Paul Mellon

July 20-October 19, 1986
West Building
Main Floor

This exhibition is in honor of Mr. and Mrs. Paul Mellon, discerning collectors whose generosity has helped establish the National Gallery of Art as one of the world's great museums of American and European art. It is comprised of nearly 100 works by American and European masters, all gifts to the National Gallery of Art from Mr. and Mrs. Mellon.

On view in the West Building's new Main Floor Galleries will be paintings, watercolors, and prints by the American artists Homer, Bellows, and Eakins, and such British artists including Hogarth, Zoffany, Wright of Derby, and Constable and French masters such as Cézanne, van Gogh, Seurat, Renoir, and Matisse.

The selection will feature works of art recently given to the National Gallery, many of which have never been shown at the Gallery. These include French impressionist and post-impressionist paintings, watercolors, and prints, as well as English and American paintings.



Winslow Homer, *Autumn*, 1877
National Gallery of Art,
Collection of Mr. and Mrs. Paul Mellon

CONTINUING EXHIBITION



George Inness, *Clearing Up* (detail), 1860
George Walter Vincent Smith Art Museum,
Springfield, Massachusetts

George Inness

Through September 7, 1986
West Building
Ground Floor

The first national retrospective exhibition of the highly influential 19th-century American landscape painter, *George Inness* (1825-1894) highlights the artist's work from the early assimilation of French Barbizon landscape art in the early 1850s to his development of an original, expressive artistic language.

Frequently and erroneously associated with Hudson River School paintings, George Inness' landscapes are characterized by an intimate and atmospheric quality which make his style unique among his contemporaries. Inness achieved enormous popularity in the late 19th century, but his reputation declined after his death. In recent years his status as one of America's premier

landscape painters has been reaffirmed, culminating in this exhibition, which has been seen in four other U.S. cities.

The exhibition is highlighted by some of Inness' greatest works, including *The Lackawanna Valley* (1855), *Clearing Up* (c. 1860), *The Coming Storm* (1879), and *Sundown* (1894).

This selection of Inness' works has been distilled from the larger exhibition organized by Michael Quick, curator of American art, Los Angeles County Museum of Art, and Nicolai Cikovsky, Jr., curator of American art, National Gallery of Art.

CONTINUING EXHIBITIONS

Baroque Paintings from the John and Mable Ringling Museum of Art

Through September 29, 1986
West Building
Main Floor

The John and Mable Ringling Museum of Art, containing one of America's foremost collections of baroque paintings, is celebrating its 40th anniversary of ownership by the state of Florida. To commemorate this occasion, a group of 33 works by Italian, French, Dutch, and Flemish masters is on view in the West Building, Main Floor, through September 29.

Formed chiefly during the 1920s by John Ringling, the famous circus entrepreneur, and his wife Mable Burton Ringling, and housed in a lavish villa derived from 15th-century Italian prototypes, the Ringling Museum collection is exceptional in both quality and number.

This exhibition, selected by Anthony F. Janson, chief curator of the Ringling Museum, includes works by Bernardo Strozzi, Giovanni Paolo Panini, Salvator



Peter Paul Rubens, *Portrait of the Archduke Ferdinand*, 1635
John and Mable Ringling Museum of Art

Rosa, Nicolas Poussin, Simon Vouet, Anthony van Dyck, Peter Paul Rubens, Willem van Aelst, Frans Hals, and Jan Davidsz. de Heem.

FROM THE GALLERY'S PERMANENT COLLECTION

Recent Acquisitions in the Graphic Arts Collection

Through September 7, 1986
West Building
Ground Floor

In 1983 the National Gallery's West Building exhibition space was expanded with the renovation of the Ground Floor Galleries. The new rooms provide areas for a rotating survey of the Gallery's permanent collection of graphic arts.

Currently on view, through September 7, 1986, is a selection of recent acquisitions, representing a diverse group of European and American prints and drawings from the 15th through the 20th centuries. Included are works by Albrecht Dürer, Rembrandt, Edgar Degas, Winslow Homer, and Robert Rauschenberg.

Reinstallation of the Twentieth-Century Collection

The reinstallation of the 20th-century collection and selected loans on the Mezzanine and Upper Level, East Building, will be complete by the July 4th weekend. Featured in this installation are rooms devoted solely to the works of single artists including Al Held, Jasper Johns, Ellsworth Kelly, Roy Lichtenstein, Robert Rauschenberg, Mark Rothko, and others. Some of the works on view have been installed for the past year on the Concourse Level while the Mezzanine and Upper Levels were being used for *The Treasure Houses of Britain* exhibition which closed April 13, 1986.

CLOSING EXHIBITION

The Index of American Design: Watercolors of Textiles and Costumes

Through July 13, 1986
West Building
Ground Floor

The Index of American Design is a collection of approximately 17,000 watercolor renderings depicting American decorative arts, including ceramics, carvings, and domestic utensils, from the colonial period through the 19th century. Established during the depression as a Federal Work Project to record the American design tradition, the watercolors were made from 1935 to 1942 and became part of the National Gallery's permanent collection in 1943.

The costume and textile renderings, on view in the West Building's Ground Floor Galleries through July 13, 1986, exemplify the Index



Bonnet, rendered by Florence Earl, 1935/1942
National Gallery of Art, Index of American Design

artists' meticulous efforts to reproduce the color and texture of various woven, embroidered, and printed fabrics. The renderings are not only accurate documents, but also extraordinary examples of trompe l'oeil painting.

GENERAL INFORMATION

NATIONAL GALLERY OF ART

Washington, D.C. 20565

The telephone number for general information is 202-737-4215.

To change your mailing address for the calendar of events, please mail a copy of your new address to the Information Office, National Gallery of Art, Washington, D.C. 20565, taking care to include the mailing label from your last Calendar of Events.

GALLERY HOURS:

Monday through Saturday 10:00 a.m. to 5:00 p.m.

Sunday noon to 9:00 p.m.

The Gallery is located between 3rd and 7th Streets, N.W., on Constitution Avenue. The East and West Buildings are connected by an all-weather underground passage with a moving walkway. Entrances to the West Building are on the Mall, on 7th Street, on Constitution Avenue at 6th Street, which has a ramp for the handicapped, and off 4th Street. The entrance to the East Building is on 4th Street off National Gallery Plaza and also has a ramp for the handicapped.

RESTAURANTS

Four restaurants offer luncheon and light snacks throughout the year. Monday through Saturday, hours of operation are:

Terrace Café: 11:00 to 4:30

Café/Buffer: 10:00 to 3:30

Cascade Café: 11:00 to 3:30

Garden Café: 11:00 to 4:30

Sunday hours are noon to 6:00 p.m. for the Terrace Café, Café/Buffer, and Garden Café; noon to 4:30 for the Cascade Café.

COVER:

Henri Matisse, *Still Life with Sleeping Woman*, 1940

National Gallery of Art,

Collection of Mr. and Mrs. Paul Mellon